



RVZC30 & RVZC30BB Specifications

Low Temp Reach-Ins with 63" Doors

Energy Data

Refrigeration	LINE-UP DATA		INDIVIDUAL CASE DATA (Includes 1 Pair of End Panels)							
	Per Door Avg		2-Dr		3-Dr		4-Dr		5-Dr	
	F.F.	I.C.	F.F.	I.C.	F.F.	I.C.	F.F.	I.C.	F.F.	I.C.
Evaporator Temperature (°F)	-7	-16	-7	-16	-7	-16	-7	-16	-7	-16
Baseline Btuh w/ SSC Fan Motors ^{1,2,3} <small>(see note #1 for components included in baseline Btuh)</small>	1,080	1,150	2,540	2,710	3,560	3,800	4,590	4,900	5,630	6,020
Baseline Btuh w/ PSC Fan Motors ^{1,2,3} <small>(see note #1 for components included in baseline Btuh)</small>	1,120	1,190	2,620	2,790	3,680	3,920	4,750	5,060	5,830	6,220
Discharge Air Temp. (°F) (with 8°F Superheat)	-3	-12	-3	-12	-3	-12	-3	-12	-3	-12
Btuh Deducts	Btuh									
Back-To-Back (Model BB)	-75	-85								
LED Lighting <small>(consult factory for other LED options)</small>	-75	-75								
No-Energy Doors	-50	-50								
Btuh Adders	Btuh									
Standard-Energy Doors	200	210								
Optional Glass-Windowed End Panel - Each	900	1,000								

Fan Motors (115V) ⁴	Amps	Watts	Amps	Watts	Amps	Watts	Amps	Watts	Amps	Watts
High Efficiency Electronic (SSC/ECM)	0.30	20	0.60	40	0.90	60	1.20	80	1.50	100
Permanent Split Capacitor (PSC)	0.26	30	0.52	60	0.78	90	1.04	120	1.30	150
Lighting System (120V/Gemtron LED @ 115V)	Amps	Watts	Amps	Watts	Amps	Watts	Amps	Watts	Amps	Watts
T-8 Electronic	0.58	70	1.45	174	1.94	233	2.42	290	2.91	349
LED Lighting (Anthony OptiMax 2)	0.28	37	0.57	74	0.85	111	1.13	148	1.41	185
LED Lighting (Gemtron Crossfire 5100) ⁴	0.58	31	1.48	62	1.95	93	2.42	124	2.89	155
LED Lighting (GE Gen 3 Immersion) <small>(consult factory for other LED options)</small>	0.24	29	0.47	58	0.73	87	0.98	116	1.19	145
Anti-Sweat Door Heaters (115V)	Amps	Watts	Amps	Watts	Amps	Watts	Amps	Watts	Amps	Watts
Anthony 101 (Standard-Energy Doors) ²	1.61	185	3.55	408	5.10	587	6.67	767	8.27	951
Gemtron Polar (Standard-Energy Doors) ²	1.56	180	3.26	376	4.70	541	6.29	724	7.81	899
Anthony ELM (Low-Energy Doors) ²	0.90	104	2.13	245	2.97	342	3.83	440	4.72	543
Gemtron Polar LE (No-Energy Doors) ²	1.11	128	2.36	272	3.34	385	4.48	516	5.55	639
Anthony ELM II (No-Energy Doors) ²	0.81	93	1.78	205	2.58	297	3.31	381	4.05	466
Defrost Heaters (208V)	Amps	Watts	Amps	Watts	Amps	Watts	Amps	Watts	Amps	Watts
Defrost Heater ⁵	4.00	832	8.00	1,664	12.00	2,496	16.00	3,328	20.00	4,160

Notes:

1. Baseline Evaporator Btuh based on parallel rack system, T-8 lighting, low-energy doors, and specified fan motor.
2. Door Options: Standard-Energy = heated glass and rails; Low-Energy = no-heat glass and heated rails; No-Energy = no-heat glass and no-heat rails. All options have frame heat.
3. For condensing units (non-rack system), multiply Total Btuh rating by 1.06.
4. Amps are based on electrical nameplate values, watts are based on laboratory observations of actual energy use.
5. Electric Defrost: 1 per Day, 19 minutes frozen food, 28 minutes ice cream. Failsafe 45 minutes. Refer to the Installation and Operation Manual for details.
6. Hot Gas Defrost: 1 per Day, 12 to 22 minutes. Failsafe 30 minutes. Refer to the Installation and Operation Manual for details.

Physical Data

Baseline R-404A Refrigeration Piping	Outlet Size (In.)	Number of Doors	Weight (lbs.)		Case Capacity		
			RVZC30	RVZC30BB	Facings (ft ²)	Packout (ft ³) 22"/24" Shelves	
Suction Line O.D. (Std. Refrig. Exit)	7/8	2-Dr	675	1,350	27.8	51.0	55.6
2 or 3 Door Suction Line O.D. (Top Refrig)	5/8	3-Dr	925	1,850	41.4	76.0	82.9
4 or 5 Door Suction Line O.D. (Top Refrig)	7/8	4-Dr	1,235	2,475	55.1	101.0	110.1
Liquid Line O.D. (Electric Defrost)	3/8	5-Dr	1,575	3,150	68.7	125.9	137.4
Liquid Line O.D. (Hot Gas Defrost)	1/2	End Panel	30	60	N/A	N/A	N/A

11/20/09

Specifications are subject to change without notice.
Case designed to operate in an ambient temperature of 75°F and relative humidity of 55% or lower.



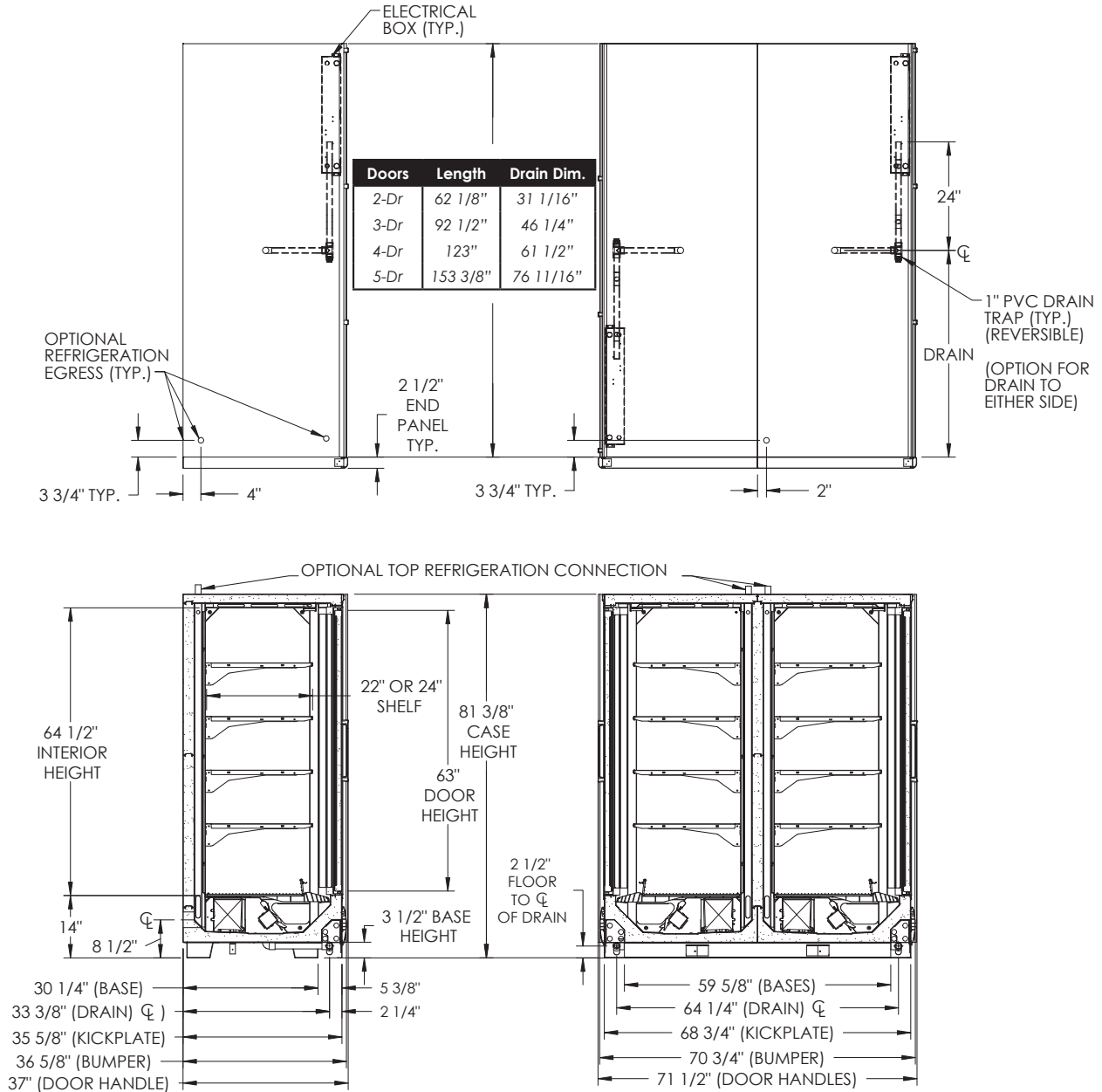
Zero Zone, Inc. • 110 N Oakridge Drive • North Prairie, WI 53153-9792
(800) 247-4496 • Fax (262) 392-6450
www.zero-zone.com





RVZC30 & RVZC30BB Specifications

Low Temp Reach-Ins with 63" Doors



- Top refrigeration connections or top electrical connections increase case height by up to 4 inches.
- BB available in 2, 3, 4, and 5-door sizes.
- End Panels and Insulated Dividers = 2 1/2".
- All dimensions are nominal.

11/20/09

Specifications are subject to change without notice.
Case designed to operate in an ambient temperature of 75°F and relative humidity of 55% or lower.



Zero Zone, Inc. • 110 N Oakridge Drive • North Prairie, WI 53153-9792
(800) 247-4496 • Fax (262) 392-6450
www.zero-zone.com

